



range brochure

ROLLERS

a full range of profit-makers

For high-speed and optimized operation, Dynapac rollers can take you the distance. A full range of vibratory and static rollers are designed to give you maximum performance, durability and versatility, and get you right to your pre-specified densities smoothly and efficiently.



Small vibratory rollers

Even though primarily designed for asphalt compaction, Dynapac's smaller roller also perform well on base and sub-base courses. dual drum drive and vibration as well as combi rollers with a vibrating drum and four rubber wheels.



Medium vibratory rollers

Roads, streets and industry sites-vibratory tandem rollers in the range 7-9 tons act as the reliable workhorses. Outstanding performance, high precision and supreme operator comfort ensure longer stints with sustained quality.



Large vibratory tandem rollers

When capacity counts, Dynapac's heavy-duty line-up delivers. Air-fields and wide roads and streets are the main applications for these class-leading rollers. Up to 2.13 meters of drum width and a static linear load of up to 40 kg/cm meet the toughest requirements in high-capacity asphalt compaction.



getting the job done on time and on budget

single drum vibratory rollers

Dynapac's range of small and medium-size vibratory rollers are used to compact all types of soil with the exception of rockfill. The rollers are suitable for most types of road construction, airfields, dam construction, harbour projects and industrial constructions. Heavy-size vibratory rollers are used for a very wide range of applications. The thickness and grade of the drum's steel are adapted for compacting rockfill, although vibratory rollers are also known for their excellent performance on other types of fill. A special version with a padfoot drum (PD) is available for compacting cohesive soils.

Single Drum Roller

Model	Operating mass, incl ROPS(kg)	Static linear load kg/cm	Centrifugal force (kN)	Amplitude Hi/Low (mm)	Frequency Hi/Low (Hz)	Engine Model
CA1300D	4800	13	89	1.7	35	Kubota V 3307 CR-TE4 (75 hp)
CA1500D	7200	20	133/72	1.8/0.8	32/36	Cummins QSB3.3 (100 hp)
CA250D	11200	30	248/121	1.7/0.8	33/33	Cummins 4BT 3.9-C (102 hp)
CA300D	12550	38	300/146	1.7/0.8	33/33	Cummins 4BTA 3.9C(*) (110 hp)
CA510D/PD	18300	58	317/231	1.8/1.1	29/31	Cummins B5.9-VE-TAA(*) (173 hp)
CA610D/PD	20700	66	317/231	1.8/1.1	29/31	Cummins B5.9-VE-TAA(*) (173 hp)
CA702D	26900	80.8	330/254	2.0/1.3	28/30	Cummins QSB6.7T3 (220 hp)

Double Drum Roller

Model	Operating mass, incl ROPS(kg)	Static linear load kg/cm	Centrifugal force (kN)	Amplitude Hi/Low (mm)	Frequency Hi/Low (Hz)	Engine Model
CC800	1575	9.3/10.0	17	0.4	70	Kubota D1105-E4B T4f (24 hp)
CC1100	2350	10.6/11.4	23	0.5	57	Kubota D1703-M (T4i) (35 hp)
CC1200	2600	10.5/11.3	27	0.5	57	Kubota D1703-M (T4i) (35 hp)
CC1300	3900	14.5/15.4	33	0.5	52	Kubota V2203-M (T4i) (44 hp)
CC2200	7700	25.7/25.7	78/67	0.7/0.3	48/67	Cummins QSB 3.3 T3 (99 hp)
CC4200	10200	29.5/29.5	139/92	0.8/0.3	51/67	Cummins QSB 4.5, IIIB/T4i (130 hp)
CC5200	11300	29.0/29.0	154/101	0.8/0.3	51/67	Cummins QSB 4.5, IIIB/T4i (130 hp)
CC6200	12000	28.2/28.2	166/106	0.8/0.3	51/67	Cummins QSB 4.5, IIIB/T4i (160 hp)
CC7200	16780	38.7/40.0	215/102	0.7/0.4	48/48	Cummins QSB 6.7(IIIA/T3) (228 hp)
CG2300	7900	26.3/26.3	80/60	0.6/0.3	45/55	Deutz TD 3.6L4 IV/T4F (74 hp)

Combination Roller

Model	Operating mass, incl ROPS(kg)	Static linear load kg/cm	Centrifugal force (kN)	Amplitude Hi/Low (mm)	Frequency Hi/Low (Hz)	Engine Model
CC1200C	2430	10.5	27	0.5	57	Kubota D1703-M (T4i) (35 hp)
CC1300C	3750	14.8	33	0.5	52	Kubota V2203-M (T4i) (45 hp)
CC2200C	7400	25.7	78/67	0.7/0.3	48/67	Cummins QSB 3.3 T3 (99 hp)
CC4200C	9500	29.5	139/92	0.8/0.3	51/67	Cummins QSB 4.5, IIIB/T4i (130 hp)
CC5200C	10000	28.7	154/101	0.8/0.3	51/67	Cummins QSB 4.5, IIIB/T4i (130 hp)



Pneumatic Tyred Rollers

Dynapac has a complete range of pneumatic tyred rollers. All have standard features offering high performance, simplicity and versatility. The roller is used to compact asphalt for sealing purposes. It is also used to compact base, sub-base and stabilized

Model	Operating mass (m)	Max Ballasted mass (m)	Engine Model
CP275	14000	30000	Cummins 4BTAA3.9-C125 (125 hp)



Steel Drum Rollers

The Dynapac CS1400 is a modern, articulated static threedrum roller with the same static linear load and drum diameter on all drums. The roller covers the asphalt mat with its full width. The Dynapac CS1400 is used primarily to compact asphalt when the course has a typical thickness of up to 50 mm, depending on the stiffness of the asphalt compound and the prevailing weather conditions. The machine is suitable for medium-size and large-size applications.

Model	Operating mass (m)	Ballasted mass (m)	Static linear load Front/Rear - (Kg/cm)	Static linear load (Ballasted) Front/Rear - (Kg/cm)	Engine Model
CS1400N	11000	13200	51/49	60/59	Cummins QSB 3.3 (99 hp)

Tamping Rollers

Dynapac has a complete range of pneumatic tyred rollers. All have standard features offering high performance, simplicity and versatility. The roller is used to compact asphalt for sealing purposes. It is also used to compact base, sub-base and stabilized



Model	Operating mass (m)	Engine Model	Rated Power (hp)
CT3000	22550	Cummins QSB 6.7	260



pave the way for profitability

The tracked pavers in the Dynapac range sets impressive standards, since these pavers are convincing at all kind of paving widths by their ease of adapting, simple use and servicability. Long track drives and wide pads guarantee for maximum traction and low maintenance due to their sealed and lifetime lubrication. The rugged track types of these pavers compensate uneven ground level and a precise electronical steering ensures excellent laying results.

Tracked Pavers

Model	Basic width (m)	Min work width (m)	Max work width (m)	Engine Model	Weight (t)
F1200CS	1.20	0.30	3.10	Deutz TD 2.9L4 (72 hp)	5.8
F1700C	1.70	0.70	4.40	Deutz TD 2011L04 (71 hp)	8.8
F2500C	2.50	2.05	8.10	Cummins QSB 6.7-C173 (150 hp)	18
F2500CS	2.50	2.05	9.00	Cummins QSB 6.7-C173 (175 hp)	18
SD2500C	2.55	2.05	9.00	Cummins QSB 6.7-C173 (175 hp)	18.5
SD2500CS	2.55	2.05	10.00	Cummins QSB 6.7-C190 (193 hp)	18.5
SD2550C	2.50	2.05	12.00	Cummins QSB 6.7-C260 (231 hp)	20
SD2550CS	2.55	2.00	14.00	Cummins QSB 6.7-C260 (264 hp)	20



pavers

Wheeled Pavers

Model	Basic width (m)	Min work width (m)	Max work width (m)	Engine Model	Weight (t)
F1700W	1.70	0.60	4.10	Deutz TD 2011 L04 (71 hp)	8.5
F1700WS	1.70	0.80	4.10	Deutz TD 2011 L04 (71 hp)	8.6
F2500W	2.55	2.05	6.60	Cummins QSB 6.7-C173 (150 hp)	17.5
SD2500W	2.55	2.05	7.50	Cummins QSB 6.7-C173 (173 hp)	18
SD2500WS	2.55	2.00	9.00	Cummins QSB 6.7-C173 (173 hp)	18

Mobile Feeders

With a non-contacting element between transport vehicles and pavers, seamless and efficient finishing of any surface becomes simple and trouble-free. The asphalt mix is forwarded by a heat resistant rubber. Via an automatically controlled and height adjusted conveyor belt at the back to the feeder.

Mobile Feeders

Model	Hopper capacity (m ³)	Feed capacity (m ³ /h)	Max conveyor feed capacity (t/h)
MF300C	8.50	3000	5000



Planer

Preparation sets the quality of the end result. Dynapac's cold planers combine precision and manoeuvrability with high capacity and efficient functionality.

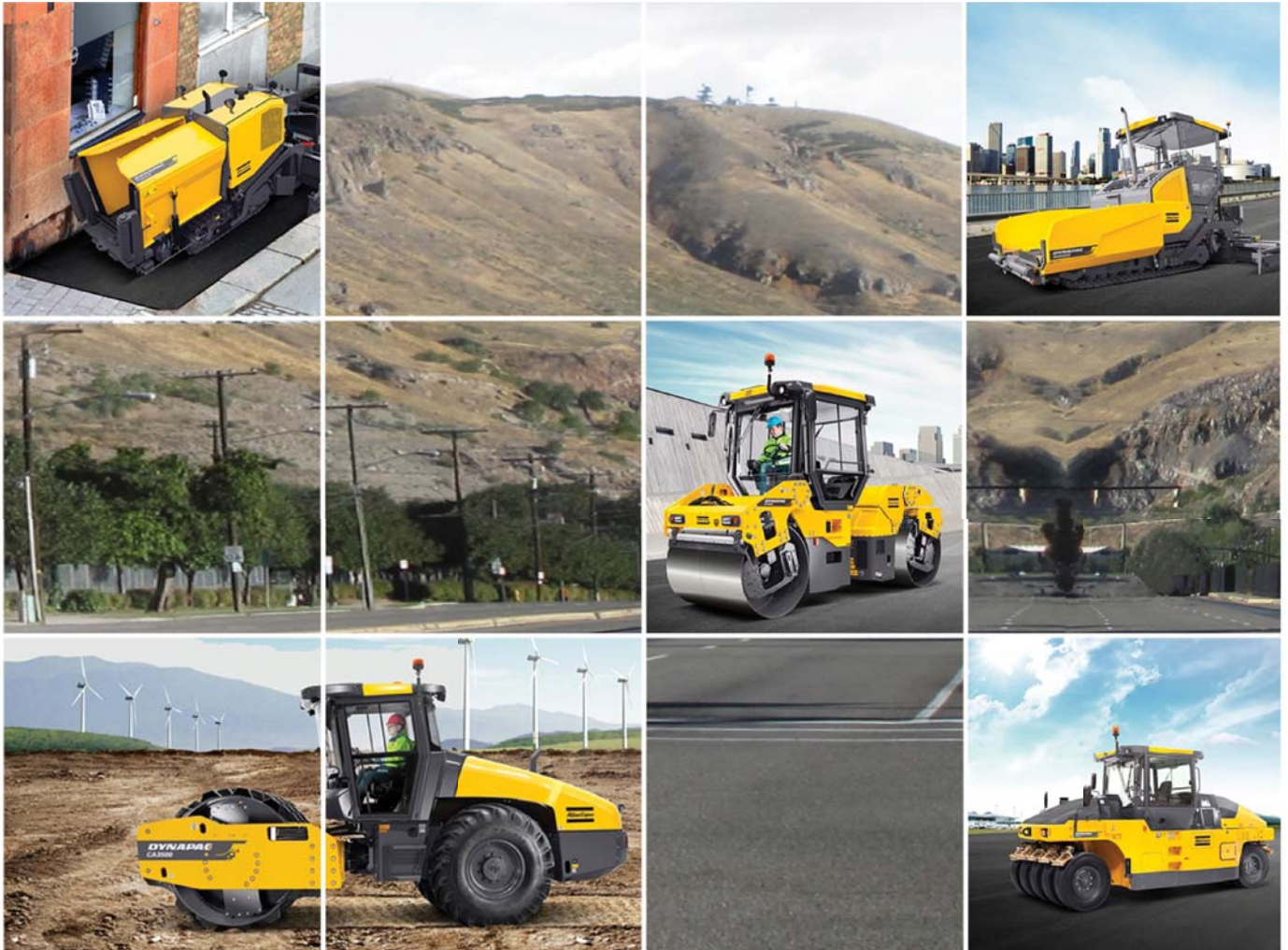
Reduced noise, large power reserves and a strong focus on the operator's environment and comfort have been the design cornerstones.

Model	Working width (mm)	Cutting Depth (mm)	Engine Model
PL500	500	200	Cummins QSB 4.5-C130 (130 hp)
PL1000	1000	300	Deutz TCD 2012L06 (110 hp)
PL2000	2010	320	Cummins QSX15 (600 hp)



pavers

Dynapac is one of the world's most specialized and experienced manufacturers of compaction and paving equipment. Our ability to present an exceptional end result is based on experience, engineering expertise, and on numerous successful innovations. Within our lean and target-oriented organization there are short and straight paths between development, manufacturing and our worldwide service network. No wonder that Dynapac is a winner when you compare performance, life-cycle cost and overall profitability.



PROBESCO

PT. PROBESCO DISATAMA

KEM Tower 15th Floor, Jl. Landasan Pacu Barat Blok 10 Kav. 2 - Kota Baru Bandar Kemayoran - Jakarta Pusat 10610

Tel : +62 21 65704111 (Hunting) | Fax : +62 21 65704110

- Surabaya** : Jl. Raya Prapen No. 40 Surabaya 60299 - Jawa Timur; Tel : +62 31 8478968 / 69; Fax : +62 31 8478971; Email : surabaya@probesco.com
- Semarang** : Jl. Gatot Subroto Raya No. 21 T - Semarang 50148; Tel : +62 24 76631555; Fax : +62 24 76631444 ; Email : semarang@probesco.com
- Pekanbaru** : Jl. Siak II Km 16 Pekanbaru 28265 - Riau; Tel : +62 761 7877540; Fax : +62 761 7877545; Email : pekanbaru@probesco.com
- Medan** : Jl. Medan - Tg. Morawa Km 13.7 Medan 20362 - Sumatera Utara; Tel : +62 61 7944488 (Hunting); Fax : +62 61 7940777; Email : medan@probesco.com
- Padang** : Jl. Prof. Dr. Hamka No. 14 Padang 25171 - Sumatera Barat; Tel : +62 751 7052517, 7052519; Fax : +62 751 446944; Email : padang@probesco.com
- Jambi** : Jl. Pangeran Hidayat No. 88 Jambi 36128; Tel : +62 741 445657 / 58 / 59; Fax : +62 741 445660; Email : jambi@probesco.com
- Palembang** : Jl. Demang Lebar Daun No. 1799 20 Ilir IV, Ilir Timur I Palembang 30128 - Sumatera Selatan; Tel : +62 711 420457; Fax : +62 711 420573; Email : palembang@probesco.com
- Balikpapan** : Jl. Mulawarman No. 4 Balikpapan 76116 - Kalimantan Timur; Tel : +62 542 747777 (Hunting); Fax : +62 542 747666; Email : balikpapan@probesco.com
- Banjarmasin** : Jl. Jend. A. Yani Km 30 No. 3A Rt. 25 / Rw.04 Banjarbaru 70721 - Kalimantan Selatan; Tel : +62 511 4784390, 4782988; Fax : +62 511 4784667; Email : banjarmasin@probesco.com
- Pontianak** : Jl. Arteri Supadio Km 15 No. 77 Pontianak 78391 - Kalimantan Barat; Tel : +62 561 725535, 7050550; Fax : +62 561 725536; Email : pontianak@probesco.com
- Makassar** : Jl. KIMA III Kav. 3A Makassar 90241 - Sulawesi Selatan; Tel : +62 411 515550, 515551; Fax : +62 411 514888; Email : makassar@probesco.com
- Sampit** : Jl. Pelita Barat No 36 Rt. 45 / Rw. 9 Sampit 74323; Tel : +62 531 33485; Fax : +62 531 25360; Email : sampit@probesco.com
- Samarinda** : Jl. Cipto Mangunkusumo No. 5 Samarinda 75131 - Kalimantan Timur; Tel : +62 541 262581; Fax : +62 541 262751; Email : samarinda@probesco.com
- Berau** : Jl. Pulau Sambit No. 776 Tanjung Redeb, Berau - Kalimantan Timur; Tel : +62 554 2020593; Fax : +62 554 2020593; Email : berau@probesco.com
- Tarakan** : Jl. Bhayangkara No. 59 Rt. 66 Tarakan 77111; Tel : +62 551 2026108; Fax : +62 551 2026032; Email : tarakan@probesco.com
- Ketapang** : Jl. Brigjen Katamso No. 91 Ketapang 78814; Tel : +62 534 34511; Fax : +62 534 34513; Email : ketapang@probesco.com
- Lampung** : Jl. Raya Natar Pemanggilan No. 18 Hajimena Lampung Selatan 35362; Email : lampung@probesco.com
- Manado** : Jl. A.A Maramis 245, Kel. Paniki Bawah, Manado 95256 - Sulawesi Utara; Tel : +62 431 811021; Email : manado@probesco.com