



更多产品信息敬请关注  
官方微信号: SOCMA123



**M** Metron

KEM Tower 15<sup>th</sup> Floor, Jl. Landasan Pacu Barat Blok B10 Kav. 2, Kota Baru Bandar Kemayoran, Jakarta Pusat 10610  
Phone: +62 21 6570 4111 (Hunting) | Fax: +62 21 6570 4110 | Email: info@metronintercon.com

Jakarta | Surabaya | Medan | Pekanbaru | Padang | Jambi | Lampung | Palembang | Balikpapan |  
Banjarmasin | Pontianak | Sampit | Samarinda | Tarakan | Ketapang | Makassar | Manado | Kendari

**SOCMA**  
华南重工

Crane forklift  
叉吊车

HNFC120-450



**福建华南重工机械制造有限公司**  
FUJIAN SOUTHCHINA HEAVY MACHINERY MANUFACTURE CO., LTD.



## 公司简介

### COMPANY PROFILE

福建华南重工机械制造有限公司致力于物流搬运机械和工程机械的研发和生产。

目前产品范围包括：重型叉车、叉吊车、越野叉车、伸缩臂叉车，正面吊等物流搬运机械，挖掘机，装载机等工程机械，以及定制应用于金属铝冶炼行业的扒渣车及加料车。

Fujian Southchina Heavy Machinery Manufacture Co. Ltd. is dedicating the research and development of material handling equipment and construction machinery. The current products ranges cover:

- 1.material handling equipment including heavy duty forklift, crane forklift, rough terrain forklift, telescopic forklift, reach stacker .
- 2.construction machinery including wheel excavator, wheel loader.
- 3.Furnace-tending vehicle&Furnace-charging vehicle, which is customized for using in the metal smelting industry.





※ **华南重工的使命**

致力于为客户提供最为皮实耐用、高性价比、高回报率的物流搬运机械及工程机械产品和服务

※ **华南重工的愿景**

让SOCMA成为源自中国受人尊敬的国际品牌

※ **华南重工的核心价值观**

以客户为中心，以奋斗者为本，坚持自我批判与反省，华南重工将长期处于成长阶段

•The mission of SOCMA

Dedicating to provide the most rugged and durable, high cost-effectiveness, high return rate material handling equipment, construction machinery products and service to our client

•The vision of SOCMA

Let SOCMA become the respectable international brand from China

•The core value of SOCMA

Customer oriented, staff foremost, insist on self criticism and Introspection, SOCMA is growing up always

我们的专业，推动您的事业  
OUR SPECIALITY PROMOTE YOUR CAREER

**SOCMA**  
华南重工



BREAKTHROUGH



INNOVATION



GROWTH





## 叉吊车产品特点

HNFC120-450叉吊车是华南重工推出的一款复合型创新产品。叉车载荷12吨，折臂吊最大起重力矩45吨·米，折臂吊可360°旋转。

### 一、发动机：

1. 采用康明斯或玉柴涡轮增压柴油发动机，动力强劲、节能环保，满足高效作业要求。

2. 散热系统右侧布置，液压马达控制液压风扇和液压油扇，可确保整机热平衡。

### 二、变速箱：

1. 采用中南传动液力变速器，无级变速，联合工况牵引力大，双变系统可靠。

2. 变速操纵阀加装空档启动装置，整机启动更安全。

### 三、驱动桥：

1. 前桥采用重型叉车驱动桥，螺旋伞齿轮和轮边行星轮减速增扭，负荷能力大，使用寿命长。六个重型钳盘式制动器，后置储气罐，制动可靠，操作安全。

2. 后桥采用横置液压缸式转向机构，转向桥结构紧凑，有利于减小转向阻力，减轻轮胎磨损，提高行驶时的平顺性。

### 四、液压系统：

1. 全液压负荷传感转向系统，后转向桥转弯半径小，转向轻便灵活。

2. 采用双泵合流工作液压系统，大幅度降低油耗、能耗。

3. 两套独立的液压系统支持两套不同的工作装置，切换阀控制时而分流时而合并，支腿伸缩自如，能适应不同的叉吊工况。

4. 由于先导控制，一根手柄能实现叉车三组动作，减小了液压控制管路，可增大驾驶室空间。

5. 折臂吊的旋转部分采用双回转马达控制，吊臂的旋转更平顺，且提高了回转马达的制动效果。

6. 液压系统加装回油散热器和背压防护装置，确保整机热平衡。

## Crane Forklift Product Features:

HNFC120-450 crane forklift is a kind of compound innovation products which is developed by SOCMA. The rated load is 12 ton, Max. lifting Moment of folding crane is 45 ton.m, The folding crane can be rotated at 360 degree.

### 1. Engine

(1) Adopt Cummins or Yuchai turbocharger diesel engine with strong power, energy-saving and environmental friendly, Acan satisfy high efficiency operation requirements.

(2) The layout of cooling radiator system is at right side, hydraulic motor controlling with hydraulic fan and hydraulic oil fan. This can ensure the heat balance of whole machine.

### 2. Transmission

(1) Adopt Zhongnan transmission hydraulic gear box, CVT, big joint working condition traction, Reliable double variables system.

(2) Neutral start-up device is installed on transmission controlling valve, this makes start-up of whole machine more safer.

### 3. Driving Axle

(1) Front axle adopts heavy duty forklift driving axle, spiral bevel gear and Wheel rim planetary gear deceleration and increasing torsion. It is big load capacity and long life span. Six heavy duty caliper disc brake, postpositional gas storage can,

reliable brake and safe operation.

(2) Rear axle adopt horizontal hydraulic cylinder type power steering structure, tight steering structure and this can reduce the steering resistance and damage of tyres, can improve the ride during the drive.

### 4. Hydraulic system

(1) Full Hydraulic load sensor steering system, small rear axle turning radius and more flexible steering.

(2) Adopt double pump interflow working hydraulic system and it can lower oil and energy consumption.

(3) Two sets of independent hydraulic system support two different working devices, shift valve control can separate the flow or combine the flow, trigger can stretch out and draw back for free and it can be adapted to different working conditions.

(4) One handle can realize three sets working movement of forklift due to the pilot control, it can reduce hydraulic controlling pipe and can enlarge the space of cab.

(5) Rotating part of folding crane is controlled by double rotary motor, which makes the rotation more smooth and improve the brake efficiency of motor.

(6) Hydraulic system install the oil-return radiator and back press protection device to ensure heat balance of whole machine.

#### 五、车架、门架：

1. 叉车属具安装在前端门架，折吊臂安装在车体的后端，折吊臂用于吊装货物，其具有伸缩和折叠功能，以方便叉吊车的行走。
2. 采用一体式车架，车架主体前后布置五个支腿，确保整机动载平衡。
3. 门架下降采用限速阀和压力选择阀，减少液压系统冲击，发动机熄火时可将门架由高处下降到地面。
4. 内外门架采用滚轮配合、动滑轮省力结构，门架使用寿命长，可靠性高。
5. 驾驶室左侧布置，折吊臂折叠后的最高点不高于叉车门架，可降低整车高度，重心更稳，通过性能更好。
6. 高型、低型、标配门架，多种属具可根据客户要求选配。

#### 六、货架：

1. 采用快换式货架，更换快捷。
2. 液压调距货叉，调整方便。
3. 卡斯卡特高强度货叉，强度更高，更耐磨，可成倍提高寿命。

#### 七、轮胎：

选用块状加深重型叉车轮胎，后转向桥可绕中心摆动，具有良好的牵引性能和通过性能。

#### 八、驾驶室：

1. 采用可调式方向机，航空座椅，坐感更舒适；先导操纵，轻便灵活。
2. 采用国内优质电器元件，免维护蓄电池，电线采用抗阻燃材料，工作可靠耐用；可选配风扇、收音机、冷暖空调、倒车显示屏、计重器。
3. 带折臂遥控器和无线接收模块，折臂吊“旋转、折叠、举升、伸缩”通过无线遥控技术控制，驾驶员可在叉吊车的任意位置进行工作，安全又可靠。
4. 采用力矩限制器，超出折臂作业范围自动报警，自动限制危险动作，作业更安全。

#### 5. Mast

- (1) Forklift Attachments are installed at front mast, folding crane is installed at the back of vehicle, folding crane is used for hanging the cargos and it has folding and telescopic function, which is convenient for travelling.
- (2) Adopt Integrated frame ,five out-triggers are arranged at the front and rear of whole vehicle frame to ensure balance of whole machine.
- (3) Falling of mast adopt speed limit valve and press selection valve to reduce the compact of hydraulic system, it can decline the mast from top to the group when the engine flameout.
- (4) Inner and outside mast adopt rolling wheel match, movement wheel force saving structure and the mast has long life and high reliability.
- (5) Cab is arranged at left side, the top height of crane after folding is not higher than mast forklift. It can lower the overall height of the vehicle, more stable and better traffic performance.
- (6) High type, low type, standard mast, various attachments can be customized according to customer's requirements.

#### 6. Fork carrier

- (1) Adopt quick-changing cargo loader, more shortcut.
- (2) hydraulic distance-adjust cargo fork and it is convenient for adjustment.
- (3) Cascade high strengthened fork, higher strength, more durable and higher life span.

#### 7. Tyres

Choose the bulk type depth heavy duty forklift tyre, rear steering axle can swing around the centre and has perfect traction and traffic performance.

#### 8. Cab

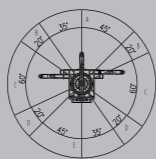
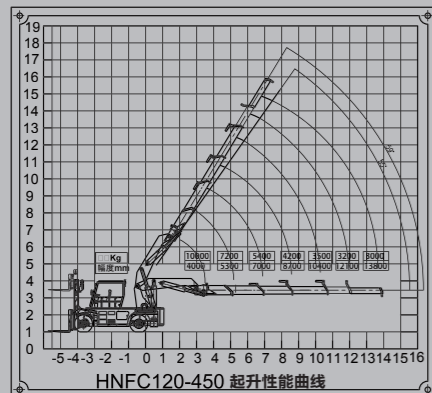
- (1) Adopt adjustable steering, aviation seat, more comfortable, automatic operation and flexible.
- (2) Adopt domestic high quality electronic components, maintenance-free battery, the wire adopts burning-resistance material, more durable. The optional parts include: fan, radio, cold and heat A/C, reversing displaying, Weighing machine.
- (3) Be with folding crane remote controller and wireless reception module. Folding Crane "Rotation, Folding, lifting, Expansion and Contracting" are controlled by remote wireless technology. The Driver can operate it at any position on the crane forklift. It is safe and reliable.
- (4) Using the torque limiter, it would automatic alarm when the operation of the arm beyond the working range , and automatic restriction of dangerous action, more safe operation.



**实在，值得信赖**

OUR QUALITY IS IN THE HABIT





Lifting operation direction diagram

- A区：可以按起升性能曲线上数值的100%作业。  
Area A: Can follow 100% lifting performance curve data to operate
- B区：可以按起升性能曲线上数值的40%作业。  
Area B: Can follow 40% lifting performance curve data to operate
- C区：可以按起升性能曲线上数值的35%作业。  
Area C: can follow 35% lifting performance curve data to operate
- D区：可以按起升性能曲线上数值的40%作业。  
Area D: can follow 40% lifting performance curve data to operate
- E区：可以按起升性能曲线上数值的70%作业。  
Area E: can follow 70% lifting performance curve data to operate

Category	Items	Unit	HNFC120-450
尺寸 Dimension	总长 Overall Length	mm	7600
	总宽 Overall width	mm	2250
	整车高度 Overall height	mm	3188
	标准起升高度 Standard lifting height	mm	3000
	载荷中心距 Load Center	mm	600
	轴距 Wheel Base	mm	3250
	前轮轮距 Front wheel Tread	mm	1650
	后轮轮距 Rear Wheel Tread	mm	1970
重量参数 Weight Parameter	自重 Weight	kg	22000
	额定载重量 Rated Load	kg	12000
行驶参数 Driving Parameter	额定功率/转速 Rated Power/Rotational Speed	kW/r/min	110/2200
	最高行驶速度（满载/无载） Max. Travelling speed(with / without load)	km/h	23/26
	外侧最小转弯半径 Min. Outside Turning Radius	mm	6500
	门架最小离地间隙 Mast Ground Clearance	mm	225
	支腿最小离地间隙 Out-trigger Ground Clearance	mm	320
	车轮数量：前/后 Wheel quantity Front/Rear	/	4/2
	前轮轮胎规格 Front Tyre Size	/	10.00-20-18PR



行驶参数 Driving Parameter	后轮轮胎规格 Rear Tyre Size	/	10.00-20-18PR	
	爬坡度（满载/无载） Gradeability (With Load/without load)	%	15	
	满载最大挂钩牵引力 Max. Hook Traction under full load	kN	70	
起重作业 性能参数 Lifting operation parameter	额定起重量(吊车) Rated Lifting Capacity(Crane)	kg	12000	
	最大额定起重力矩 Max. Rated lifting torque	Kg.m	45000	
	支腿跨距 Out-trigger distance	横向支腿 Horizontal out-trigger	mm	1580
		纵向支腿 Vertical out-trigger	mm	4320
	起重臂长度 Crane Length	基本臂 Basic Crane	mm	5550
		最长臂 Longest Crane	mm	14830
	最大起升高 Max. Lifting height	基本臂 Basic boom	mm	7000
		全伸最长臂 Crane extended	mm	15500
	臂架最小/最大仰角 Boom frame min./max. Upward angle		(°)	10/59
	门架前倾角/后倾角 Mast Front/Rear tilt angle		(°)	6/12
工作速度 Working speed	最大回转速度（空载/满载） Max. Swinging speed (unloaded/loaded)	r/min	1/1	
	最大起升速度（满载/无载） Max. Lifting speed (loaded/unloaded)	mm/s	250/260	
	最大下降速度（满载/无载） Max decline speed (loaded/unloaded)	mm/s	400/250	
	第一变幅时间 Angle time	全程起臂(空载/满载) lift upward(unloaded/loaded)	s	40/50
		全程落臂(空载/满载) lift downward(unloaded/loaded)	s	40/50

注：由于技术改进，该数据可能与产品不符，如有差异请以产品为准  
Note: the above data are subject to change without prior notice.