



SOCMA POWER LIFT YOUR BUSINESS

NEW



KEM Tower 15th Floor, Jl. Landasan Pacu Barat Blok B10 Kav. 2, Kota Baru Bandar Kemayoran, Jakarta Pusat 10610
Phone: +62 21 6570 4111 (Hunting) | Fax: +62 21 6570 4110 | Email: info@metronintercon.com

Jakarta | Surabaya | Medan | Pekanbaru | Padang | Jambi | Lampung | Palembang | Balikpapan | Banjarmasin | Pontianak |
Sampit | Samarinda | Tarakan | Ketapang | Makassar | Manado | Kendari

SOCMA TELESCOPIC FORKLIFT

HNT3507-4Z HNT4007-4Z HNT4507-4Z
HNT4517-4Z HNT5010-4Z HNT5017-4Z
HNT4017-4Z HNT7017-4Z





HNT3507-4Z/HNT4007-4Z/HNT4507-4Z multi-purpose off-road telescopic forklifts are widely used in construction, agriculture, mining, port logistics and other industries.



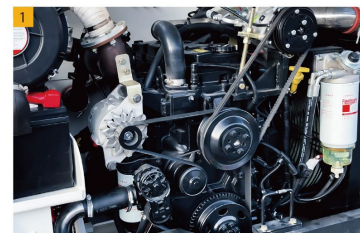


HNT 4017-4Z/HNT 7017-4Z multi-purpose off-road telescopic forklift is widely used in various industries such as construction, agriculture, mining, port logistics, municipal fire protection, etc.



1 Equipping with Cummins China National III Standard turbocharged diesel engine and high-pressure common rail fuel system, which has strong power, energy saving and environmental protection, and meets the requirements of efficient operation.

2 The power system is equipped with an air-to-air cooling radiator to reduce the intake temperature of the engine, increase the intake air volume, and increase the power of the engine



ENORMOUS POWER



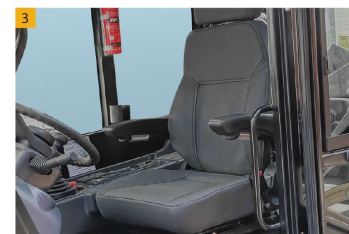
3 Adjustable steering wheel, aviation OPS seat, ergonomics, more comfortable sitting

4 Multifunctional LCD monitor, comprehensively monitor the working status of the engine, such as speed, oil pressure, oil temperature, water temperature, liquid level, etc.

5 Equipped with a HD reversing camera system, more handy in complex operating environments

6 The shape of the whole machine is grand, elegant and smooth; the luxurious wide-view cab with sunroof is convenient for the driver to observe around, with low noise and good sealing.

7 The operating device adopts a large-section, high-strength box-shaped structure, and the precise control of lifting, telescopic, and tilting movements is realized through the pilot. Two or more box-shaped telescopic working arms are selected according to different lifting heights.





1



2



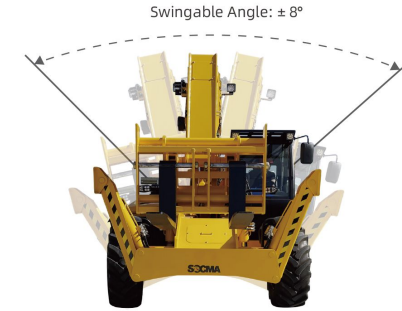
3

1 The static hydrostatic pilot control system is adopted, and equipped with hydraulic Lifting balance feature. It has good automatic adaptability and maneuverability; the closed plunger pump, electronically controlled multi-way valve, hydraulic motor, hydraulic cylinder, and electronically controlled pilot control valve all adopt well-known brands.

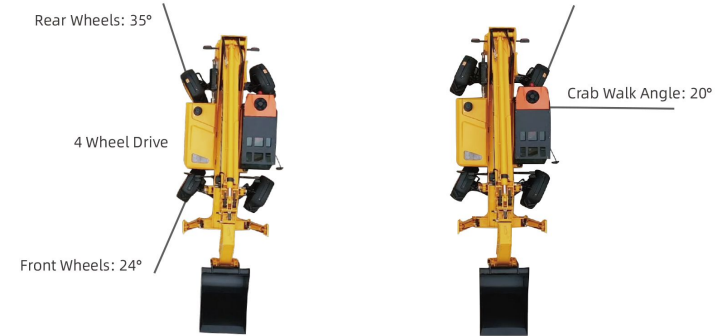
2 Equipped with Cascade high-strength forks, which are stronger and more wear-resistant, and can double the service life.

3 Equipped with off-road herringbone pattern tires, and the front and rear axles can swing around the center, which has good traction performance, passing performance and off-road performance.

◆ Swingable chassis ensures the smoothness and security during complex operations



◆ The product equips with closed static pressure, four-wheel drive and four-wheel steering walking system; it can realize four-wheel steering, crab walk and other moving modes.



◆ Standard configuration comes with quick swap attachment lock up, attachments can be replaced quickly accordingly.





1 Hydraulic balance valve control is equipped to limit the speed of the boom.

2 The hydraulic system is equipped with an oil return radiator and a back pressure protection device to ensure the thermal balance of the whole machine.

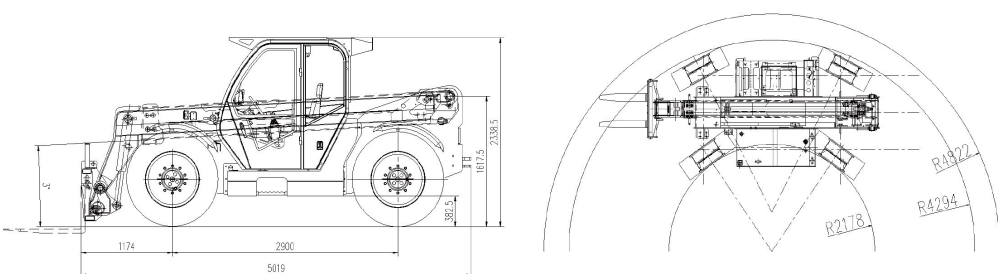
4 The long wheelbase and box-shaped frame can provide good rigidity and strength to ensure the high reliability of the forklift truck chassis

3 The Axles are equipped with hydraulic wet brakes, which can dissipate heat and break safer and faster than the traditional air breaks.

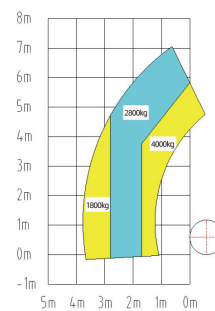
5 Equipped with high-quality electrical components, maintenance-free batteries, and wires are made of anti-flame retardant materials, which are reliable and durable; the cab is equipped with fans, radios, heating and cooling air conditioners, reversing buzzers, and reversing

Items		Unit	Tolerance	HNT3507-4Z / HNT4007-4Z / HNT4507-4Z
Basic parameters	Rated load	kg	-	3500/4000/4500
	Load center	mm	-	500
	Load capacity @ max. Forward reach	kg	-	1500/1800/2000
	Max. Lifting height	mm	1.50%	7050
	Max. Horizontal reach (without fork)	mm	1.50%	3220
	Min. Ground clearance	mm	1.50%	380
	Min. Turning radius (outer tire center)	mm	1.50%	4850
	Angle	Boom frame upward angle	°	±1
Boom frame downward angle		°	±1	-3
Dimension	Operating weight	kg	5%	8350/8500/8650
	Length (without fork)	mm	2%	5020
	Width	mm	2%	2250
	Height	mm	2%	2340
	Wheel base	mm	2%	2900
	Front wheel tread	mm	2%	1790
	Rear wheel tread	mm	2%	1790
Fork size	L*W*T	mm	-	1200x50x150
Engine	Cummins	-	-	QSB3.9-C100
	Rated power	kw/rpm	-	74//2400
Driving system	Transmission type	-	-	Hydraulic static transmission
	Max. Travelling speed (unloaded)	km/h	10%	35
	Gradeability	%	-	40%
Tire	Front 2 pcs Front Wheel	-	-	16/70-24-24PR
	Rear 2 pcs Rear Wheel	-	-	16/70-24-24PR
Capacity	Hydraulic oil tank	L	-	160
	Fuel tank	L	-	120

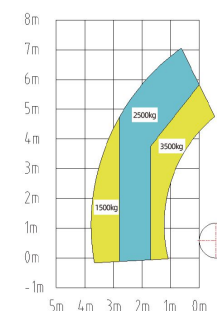
Note: The above data are subject to change without prior notice



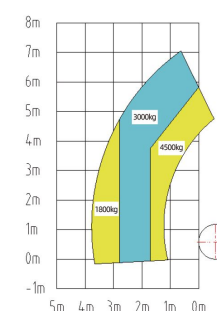
Load Charts



HNT4007-4Z



HNT3507-4Z



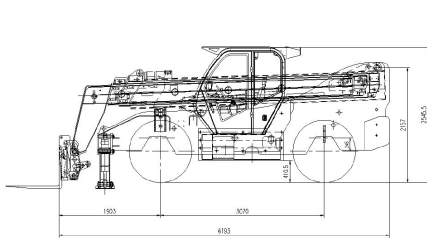
HNT4507-4Z

Items		Unit	Tolerance	HNT4517-4Z/HNT5010-4Z/HNT5017-4Z	HNT7510-4Z
Basic parameters	Rated load	kg	-	4500/5000/5000	7500
	Load center	mm	-	500	500
	Load capacity @ max. Forward reach	kg	-	400	800
	Basic boom max. Lifting height	mm	±1.5%	6930	7080
	Max. Lifting height	mm	±1.5%	16625/10370/16625	10370
	Max. Horizontal reach	mm	±1.5%	11265	4900
	Min. Horizontal reach	mm	±1.5%	1367	1350
	Min. Ground clearance	mm	±1.5%	410	425
	Min. Turning radius (outer tyre center)	mm	≤105%	5750	5960
	Angle	Boom frame upward angle	°	±1.0"	78/70/78
Boom frame downward angle		°	±1.0	-2	-2
Overall dimension	Operating weight	kg	±5%	14200/14500/14500	15500
	Length (with fork)	mm	±2%	6200	6685
	Width	mm	±2%	2500	2500
	Height	mm	±2%	2560	2710
	Wheel tread (Front/Rear)	mm	±1%	2090/2090	2125/2125
Wheel base	mm	±1%	3070	3370	
Rated power / Rated turning speed		kw/rpm	-	93/2200	119/2200
Driving system	Max. Travelling speed (unloaded)	km/h	±10%	25	25
	Max. traction	Kn	±10%	56	70
	Gradeability	%	-	25	25
Tier	Front (2 pcs)	-	-	16/70-24-24PR	14.00-24-32PR
	Rear (2pcs)	-	-	16/70-24-24PR	14.00-24-32PR
Engine	Dongfeng Cummins	-	National 2	QSB3.9-C125	QSB4.5-C160
Hydraulic system	Without load extension/retraction time	s	±10%	19/17	19/17
	With load extension/retraction time	s	±10%	21/18	21/18
	Up/Down Time	s	±10%	19/16	19/16
	Fork up and down tilt angle	°	±1	10/79	10/73

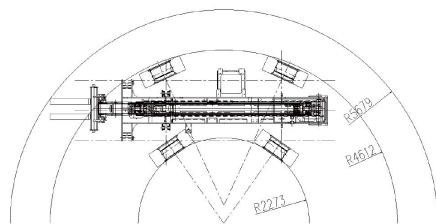
Note: The above data are subject to change without prior notice

Items		Unit	Tolerance	HNT4017-4Z / HNT7017-4Z		
Basic parameters	Rated load	kg	-	4000/7000		
	Load center	mm	-	500		
	Load capacity @ max. Forward reach	kg	-	400/800		
	Max. Lifting height	mm	1.50%	16625/16900 (with outrigger)		
		mm	1.50%	16510/16800 (without outrigger)		
	Max. Horizontal reach(without fork)	mm	1.50%	11.8		
	Min. Ground clearance	mm	1.50%	410/425		
	Min. Turning radius (outer tire center)	mm	1.5%	6250/5757		
	Angle	Boom frame upward angle	°	±1	78/70	
		Boom frame downward angle	°	±1	-2	
Operating weight	kg	5%	15000/17000			
Dimension	Length (without fork)	mm	2%	6200/6720		
	Width	mm	2%	2500		
	Height	mm	2%	2560/2710		
	Wheel base	mm	2%	3070/3370		
	Front wheel tread	mm	2%	2090/2125		
	Rear wheel tread	mm	2%	2090/2125		
Fork size	L*W*T	mm	-	1200*150*50/1220*150*65		
Engine	DF Cummins QSB3.9-C125-30		-	QSB3.9-C125/QSB4.5-C160-30		
	Rated power	kw/rpm	-	93/2200 119/2200		
	Transmission type			Hydraulic static transmission		
Driving system	Max. Travelling speed (unloaded)	km/h	10%	25		
	Gradeability	%	-	25%		
Tier	Front2 pcsFront Wheel	-	-	16/70-24-24PR	14.00-24-28PR	
	Rear 2 pcsRear Wheel	-	-	16/70-24-24PR	14.00-24-28PR	
Capacity	Overall width(with outrigger)	mm	10%	3790		
	Frame leveling	°	5%	±8°		
Capacity	Hydraulic oil tank	L	-	220/320		
	Fuel tank	L	-	130/215		

Note: The above data are subject to change without prior notice

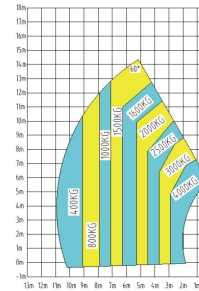


HNT4017-4Z



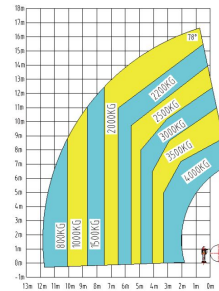
Load Charts

with fork, without outrigger
load center:500mm

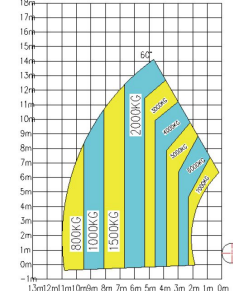


HNT4017-4Z

with fork, with outrigger
load center:500mm

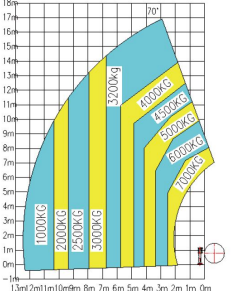


with fork, without outrigger
load center:500mm



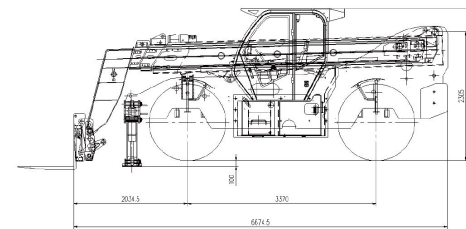
HNT7017-4Z

with fork, with outrigger
load center:500mm



Load Charts

Max. Lifting height(with outrigger)	17000mm
Rated load capacity	4000kg
Rated load at Max. Lifting height(with outrigger)	2000kg
Rated load at Max. Lifting height(without outrigger)	1500kg
Rated load at Max. Horizontal reach(with outrigger)	800kg
Rated load at Max. Horizontal reach(without outrigger)	400kg



HNT7017-4Z

